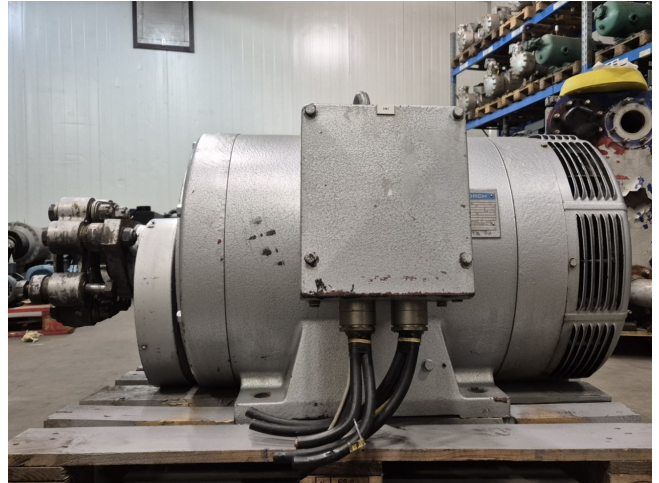


Schorch KN5315M-CB011Z

Specifications

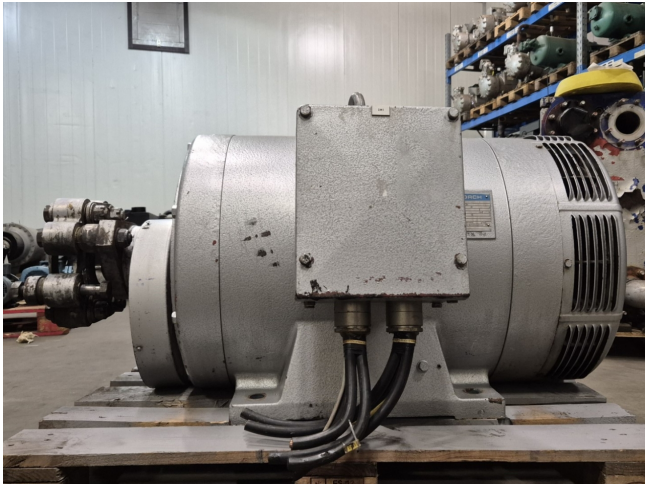
Marque	Schorch
Type	KN5315M-CB011Z
kW	132
RPM	985
Size & Weight	1340x860x760 mm (LxWxH) &
50 Hz / 60 Hz	50 Hz
Stock	1



Description

Used Schorch KN5315M-CB011Z

Used Schorch KN5315M-CB011 Z electric motor with the following specifications: 50 Hz - 132 kW - 985 RPM.



SCHORCH					
3~	Mot	Typ	KN 5315M-CB011 Z		
DIN-Baugr. 315 M		IP 23	Nr. 47022201 / 1		
Δ		380	V	245	A
132	kW	cos φ 0,87		985	/min
			V		A
Isol.-Kl. 3			t		
Je Lager nach 6000		Betriebsst.		45	g Fett
Sortenempfehlung siehe Betriebsanweisung					
Fettsorte :					
MADE IN GERMANY					



